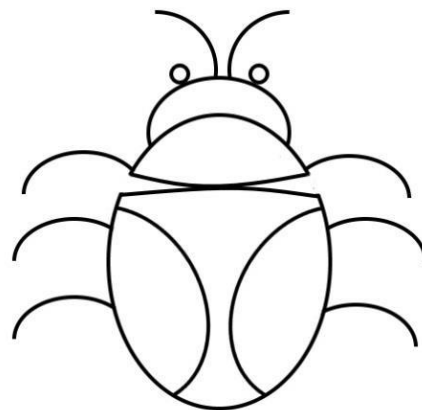


## Beetle drive [www.cleek.dk](http://www.cleek.dk)

(as played with my grandparents in rural Aberdeenshire, Scotland)

### Roll the dice and draw the beetle

- 1 = a leg
- 2 = an eye
- 3 = an antenna
- 4 = a wing
- 5 = the head
- 6 = the body



You **must** roll a 6 to start. Draw the body.

Then you may draw a leg, a wing and the head when you roll the appropriate number. You may first draw the eyes and antennae after the head is drawn (you have rolled a 5).

